



Via Della Meccanica, 3/A
Tel. +39 (0) 45 505410
37139 Bassona ZAI2
Fax +39 (0) 45 505440
Verona ITALY
C.F. e P.IVA 02659120238
Cap. Soc. Euro 10.200 i.v.
R.E.A.. 253294

www.oversea-online.com

email:

info@oversea-online.com

amministrazione@pec.oversea-online.com



COMPANY PRESENTATION





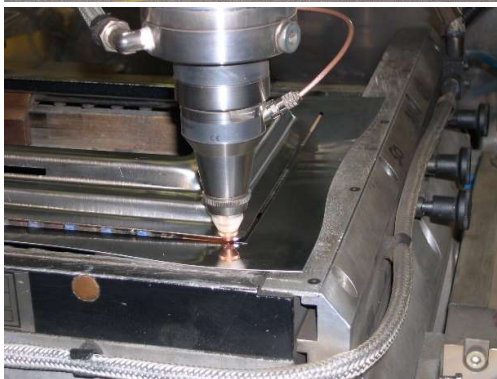
Our many years of experience in moulding, cutting, and drawing of metals like **stainless steel**, **iron**, and **copper** have made it possible for us to specialize in the production of accessories for chimneys and outsourcing, reaching an excellent level of technical-production quality.

Our high level of technological know how and our remarkably qualified technical staff make it possible for us to resolve all the issues concerning the engineering and construction of equipment for the production of our own details or those developed by our clients.

ISO 9001 certified since 2004, we rely on an IT system that manages and controls all the production processes with digital recordings of the audits carried out during each phase of our production cycle.

A digital system stores all the certificates of the raw materials and products purchased to guarantee their traceability all the way up to the finished products, all of which bear a Laser marking of our logo, the product code, and the production lot to safeguard their quality and reliability.

Our dynamism and flexible approach mean that we are always ready to take on the latest market trends to support both our loyal and potential clients with the utmost expertise.



Our Products



ROUND COVER LOW TEMPERATURE

This product is designed to be installed in flues with high rates of condensate where there is a T tube union, so as to allow inspection.

The round plug is composed of two elements, one outside, covering the pipe, the other inside, going into the pipe itself.

Between the two elements there is a silicone seal. This seal is temperature and condensate for GAS and GASOIL resistant, temperature class T200, homologated by the IMQ -AT15S0479252-01 at 03/07/2015.

This seal, under compression by means of an eccentric lever or handwheel, expands when getting on contact with the internal surface of the pipe. This creates a sealing effect against the smokes passing through the flue and the condensates inside it.

If necessary, the compression of the seal can be modified by means of a threaded journal integrated in the lever or handwheel.

The product is made of the following materials:

- Metal parts: sp. 10/10 AISI 304 BA – AISI 316L 2B or Copper: Cu DHP UNI 5649/1
- Lever or handwheel: of moisture and weather-resistant plastic with temperatures between -20°C and $+240^{\circ}\text{C}$.



ROUND COVER HIGH TEMPERATURE RESISTANT

This product has been designed to be used for flues with operation temperatures higher than 200°C and up to 700°C - 800°C . It is to be installed on a T pipe union, so as to allow inspection.

The round cover is made of two elements, one, outside, covers the pipe and the other, inside, goes into the pipe itself.

Between the two elements there is a metal seal AISI 302/316 with a heat-insulating jacket of ceramic fiber to insulate heat of the external element.

This seal, under pressure by means of handwheel, expands and gets in contact with the internal surface of the pipe, thus creating that sealing effect against smokes passing through the flue.

If necessary, the seal pressure can be modified by means of a threaded journal integrated in the handwheel.

The product is made of the following materials:

- Metal parts: sp. 10/10 AISI 304 BA – AISI 316L 2B or Copper: Cu DHP UNI 5649/1
- Handwheel: AISI 303

In both steel and copper versions, on request the internal plate is available in AISI 316L 2B





ROUND COVER FOR PLASTIC CHIMNEY FLUE

This product is designed to be installed in flues with high rates of condensate where there is a T tube union, so as to allow inspection.

The round cover is composed of two elements, one outside, covering the pipe, the other inside, going into the pipe itself.

Between the two elements there is a silicone seal. This seal is temperature and condensate for GAS resistant, temperature class T140, homologated by the IMQ -AT15S0479252-03 del 01/12/2015.

This seal, under compression by means of an eccentric lever or handwheel, expands when getting in contact with the internal surface of the pipe. This creates a sealing effect against the smokes passing through the flue and the condensates inside it.

If necessary, the compression of the seal can be modified by means of a threaded journal integrated in the lever or handwheel.

The product is made of the following materials:

- Metal parts: sp. 10/10 AISI 304 BA – AISI 316L 2B or Copper: Cu DHP UNI 5649/1
- Lever or handwheel: of moisture and weather-resistant plastic with temperatures between -20°C and $+240^{\circ}\text{C}$.



INSPECTION HATCH

The Inspection hatch is made of a structure working as a fastening base for the manhole on the flue. It is made of two surfaces.

The inside surface can be removed and works as a thermal insulator by means of a 6 mm thick heat-insulating jacket, made of a glassy fiber ecology that can resist up to 1000° Celsius.

The outside surface, fixed to the structure, works as a water and air-sealing surface by means of a NEOPRENE seal, locks the internal surface inside the structure by means of a mechanical clasp.

All the metal parts of the Inspection hatch are made of steel sp. 8/10 AISI 304 BA or Copper: Cu DHP UNI 5649/1.



SQUARE KEY

The square key to open the inspection hatch is made of self-destroying plastic, "class V0".

It is weather resistant and resistant to temperatures from -20° up to +120° Celsius.





MANOMETER HOLDER AND SMOKES DRAWING

The manometer holder is composed of a base plate, which allows the part to be fastened on the flue. On the flue there are two holes to which some collars are spot-welded. In the case of a double-surface flue they allow to overtake the insulation zone and get inside the flue.

The big hole is closed by a drilled plug to read the temperature of the manometer. It can therefore contain the manometer. The small hole, on the contrary, is closed by means of a blind plug. The clasps are mechanical.

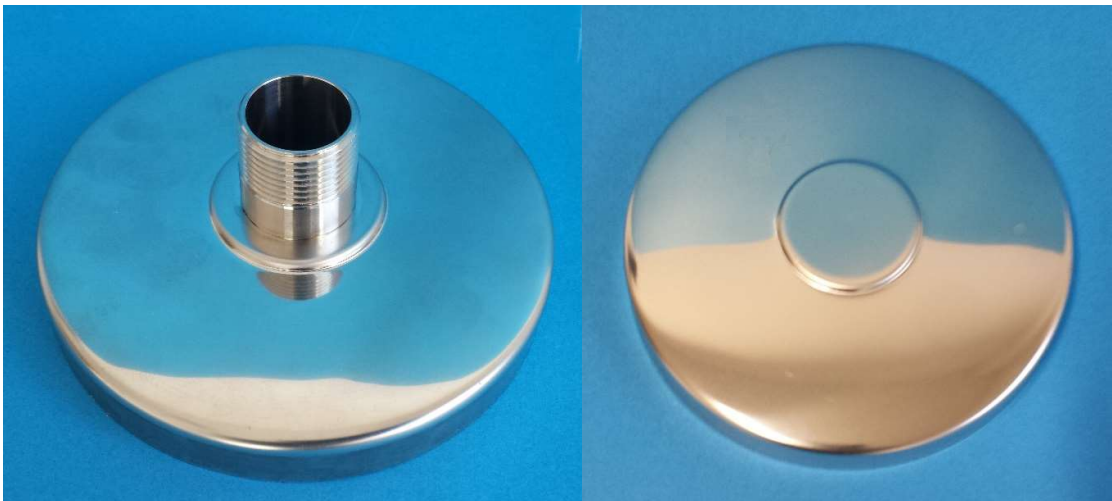
Some seals that can resist up to + 200° Celsius guarantee a sealing effect against the smokes and the possible condensate of the flue. These seals are placed on the closing plugs and, if there is a manometer, under it.

All the mechanical parts are made of stainless steel sp. 10/10 AISI 304 BA or Copper: Cu DHP UNI 5649/1.



CONDENSATION EXHAUST

The condensation exhaust is the element installed at the bottom part of the flue to gather the acid condensates deriving from the flue. It is composed of one piece to which a threaded sleeve for the discharge of the condensate is connected and it is made of stainless steel AISI 316L.



AIR INTAKE + COLLAR

This article is made to be installed outdoors in correspondence to the boiler air intake.

It may be equipped with its collar, to seal the hole in the wall where the pipe passes.

The product is produced in the following materials: AIS I 304 BA



FLAT FLASHING

The flat flashing is the fire-resistant terminal element of the chimney flue that soaks up the inner tube with the outer coat of flue itself.

It is made of a base plate where is done a hole with an edge, on which is then assembled a tube that can have holes for the ventilation of the flue.

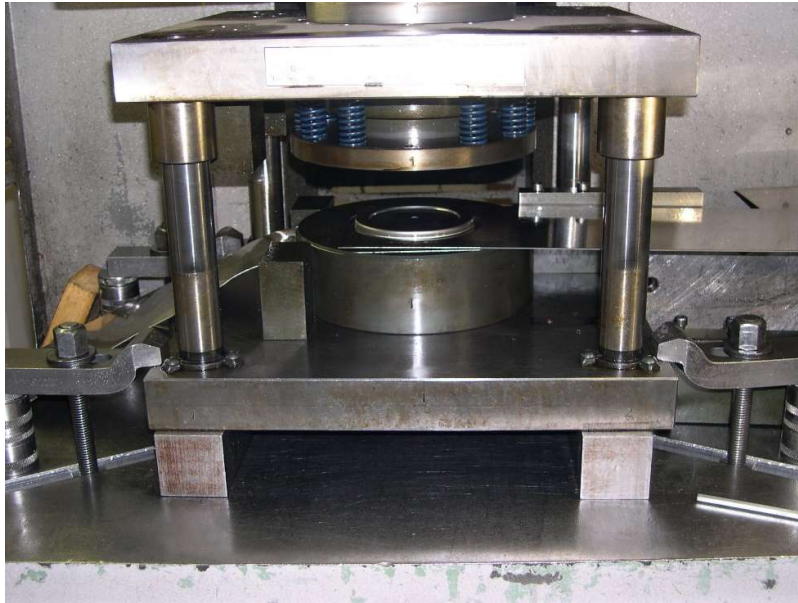
All the metal parts of the flat flashing are made of steel thk. 5/10 AISI 304 BA-2B.



Services

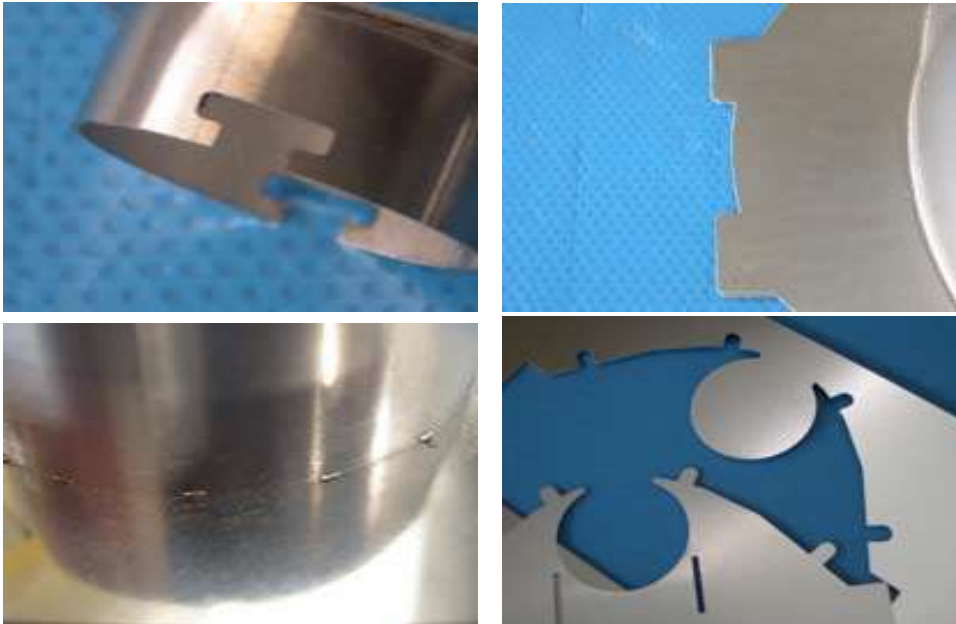
MOULDING – DEEP-DRAWING

We can carry out blanking and presswork for small and mid-sized lots with 65-100 ton presses equipped with an electronic decoiler and roll feeder.



LASER CUTTING-WELDING

Our production system offers LASER cutting and welding of stainless steel and/or iron up to a thickness of 1.5 mm and aluminium up to 1 mm, with a range of action of 1000x500 mm, by means of a robotized 5-axe LASER cell with capacitive cutting head that allows cutting even on surfaces that are not totally flat and/or slightly or considerably wavy. Nitrogen-shielded spot and /or continuous welding guarantees a result without the oxidation of the joined surfaces, therefore very light in color.



LASER MARKING

We are capable of producing indelible laser marking on various materials, including stainless steel - iron – copper – aluminium – plastics (suitable for this type of process, ex: computer keys) - wood. Such marking may be alphabetic and/or designs of curved and/or geometric lines, ranging from 270x270 mm beginning with a DWG – DXF – or JPEG file and/or created on the same machine according to client specifications.



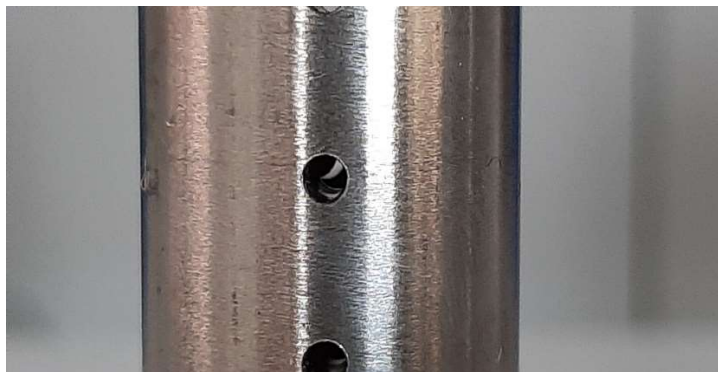
TURNING

By means of a numerically controlled lathe with 5 axes, we are able to accomplish turning pieces of various shapes and dimensions according to customer specifications.

Maximum diameters of turning: $\varnothing 350$

Length: 350 mm.

You can achieve medium / large production lots, as the lathe is fed by push-bar with bar passage $\varnothing 75 \text{ mm.}$ with variable lengths up to 350 mm.



MILLING

Thanks to a 5-axis CNC machining center, we are able to carry out milling operations according to customer specifications.

Action range, X / Y / Z axis travel: 750/600/520 mm

Multi-touch and Siemens control



Gallery

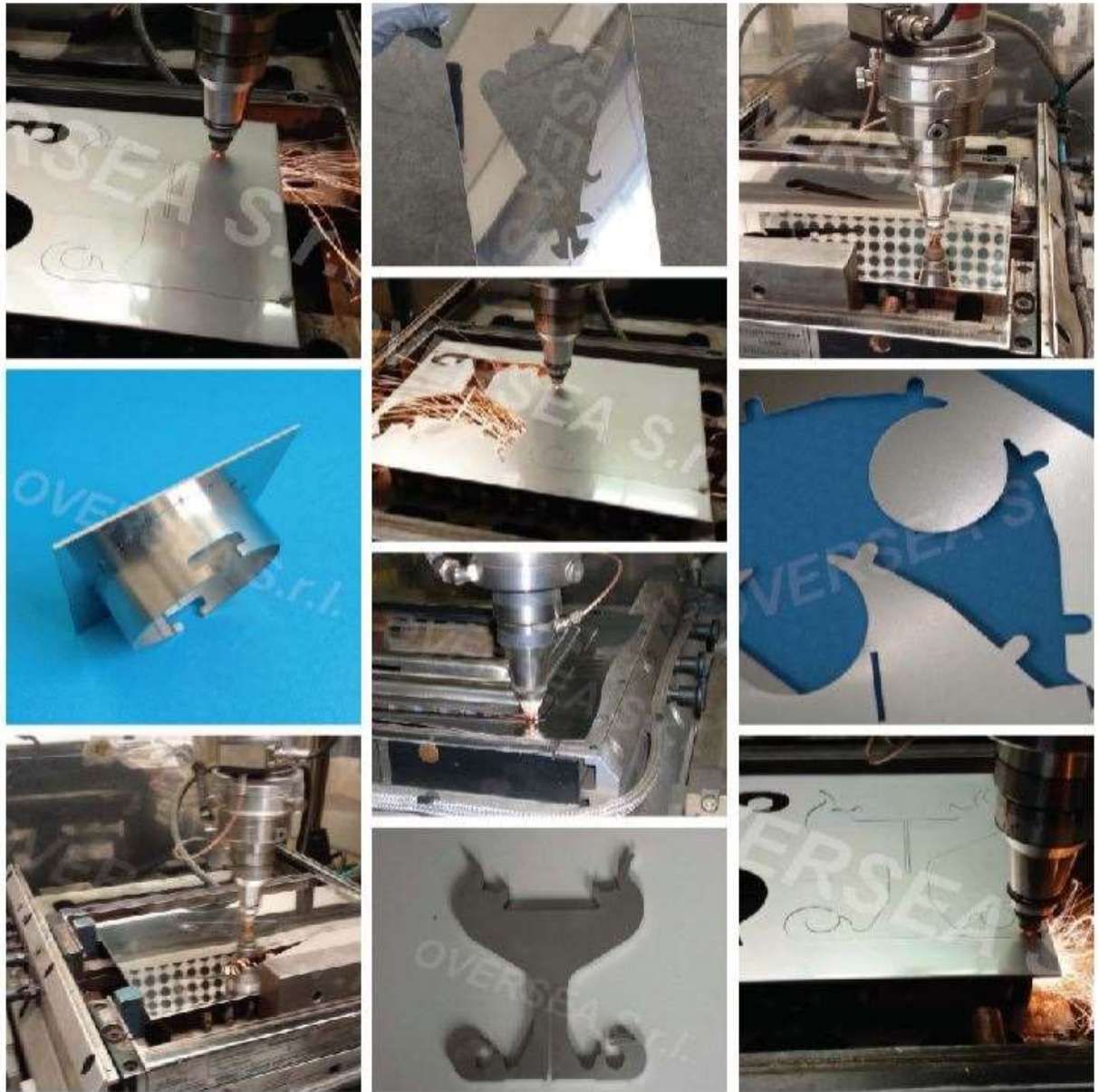
SERVICES: MOULDING – DEEP-DRAWING



SERVICES: LASER MARKING



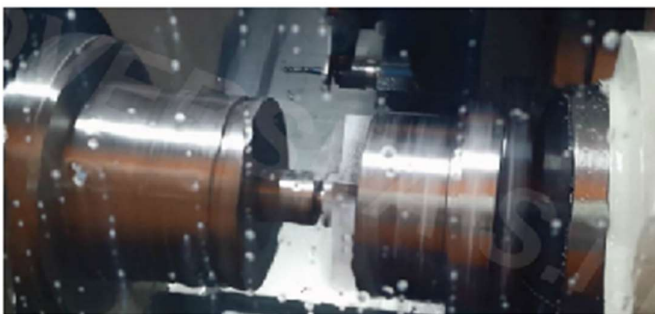
SERVICES: LASER CUTTING



SERVICES: LASER WELDING



SERVICES: TURNING



SERVICES: MILLING



PRODUCTS and ACCESSORIES FOR CHIMNEY FLUES
(stainless steel, iron and copper)



SEMIFINISHED PRODUCTS and TOOLS



OVERSEA PLUS LINE DESIGN OBJECTS





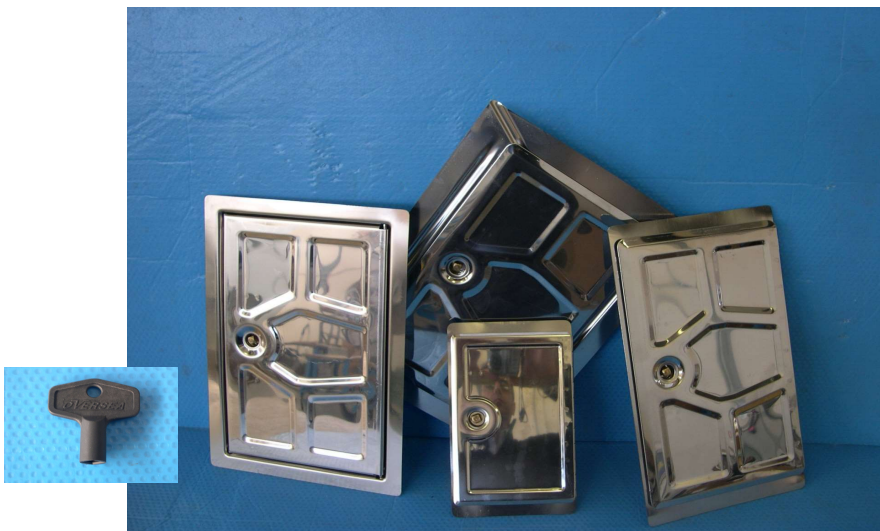
PRODUCT RANGE



Production of accessories for flues - Deep drawing sheet metal forming - CNC Turning- 2D/3D Laser cutting and welding



Inspection hatch + Key



Production of accessories for flues - Deep drawing sheet metal forming - CNC Turning- 2D/3D Laser cutting and welding



Technical sheet

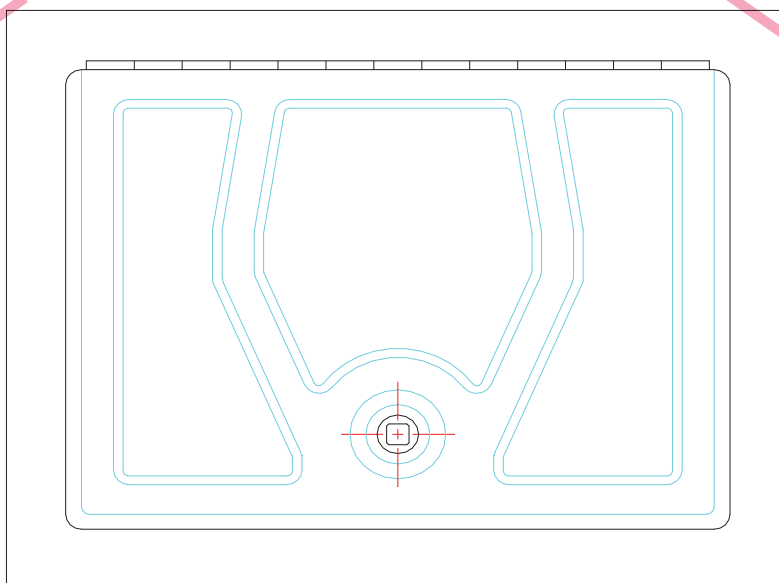
Inspection hatch

The inspection hatch is made of a structure working as a fastening base for the manhole on the flue. It is made of two surfaces.

The inside surface can be removed and works as a thermal insulator by means of a 6 mm thick heat-insulating jacket, made of a ecologic glassy fibre that can resist up to 1000° Celsius.

The outside surface, fixed to the structure, works as a water and air sealing surface by means of a **neoprene seal**, and locks the internal surface inside the structure by means of a mechanical clasp.

All the metal parts of the inspection hatch are made of steel thk. 8/10 AISI 304 BA or Copper: Cu DHP UNI 5649/1.



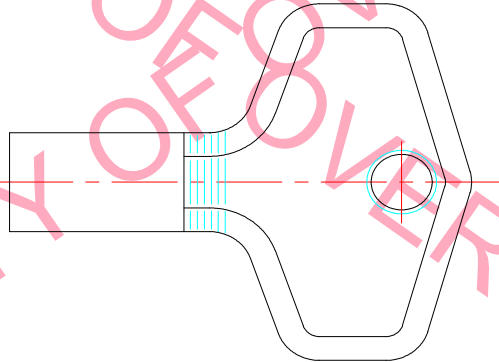


Technical sheet

Square Key

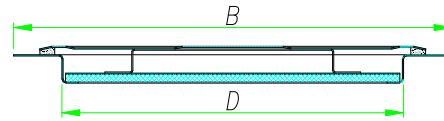
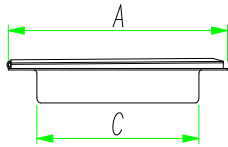
The square key to open the inspection hatch, is made of self-destroying plastic, "class V0".

It is weather resistant and resistant to temperatures from -20° up to +120° Celsius.



Inspection hatch

Material: AISI 304 BA - COPPER



Product code	Description	Dimensions					
		A	B	C	D	E	F
0000001010100	Inspection hatch Mod. 01A	200	290	170	260		
0000005010100	Inspection hatch Mod. 01B	165	290	122	230		
0000001910100	Inspection hatch Mod. 01B	165	295	122	230		
0000016910100	Inspection hatch Mod. 02	225	306	122	230		
0000011010100	Inspection hatch Mod. 03	220	330	170	260		
0000005110100	Inspection hatch Mod. 03	225	330	170	260		
0000014010100	Inspection hatch Mod. 04	330	330	290	290		
0000016010100	Inspection hatch Mod. 05	113	190	93	152		
0000017010100	Inspection hatch Mod. 05	113	172	93	152		
0000020510100	Inspection hatch Mod. 06	162	222	120	180		
0000026410100	Inspection hatch Mod. 06	158	230	120	180		
0000020410100	Inspection hatch Mod. 06	160	250	120	180		
0000033110100	Inspection hatch Mod. 07	256	390	246	314		
0000001010200	Inspection hatch Mod. 01A COPPER	200	290	170	260		
0000005010200	Inspection hatch Mod. 01B COPPER	165	290	122	230		
0000001910200	Inspection hatch Mod. 01B COPPER	165	295	122	230		
0000016910200	Inspection hatch Mod. 02 COPPER	225	306	122	230		
0000011010200	Inspection hatch Mod. 03 COPPER	220	330	170	260		
0000005110200	Inspection hatch Mod. 03 COPPER	225	330	170	260		
0000014010200	Inspection hatch Mod. 04 COPPER	330	330	290	290		
0000016010200	Inspection hatch Mod. 05 COPPER	113	190	93	152		
0000017010200	Inspection hatch Mod. 05 COPPER	113	172	93	152		
0000020510200	Inspection hatch Mod. 06 COPPER	162	222	120	180		
0000026410200	Inspection hatch Mod. 06 COPPER	158	230	120	180		
0000020410200	Inspection hatch Mod. 06 COPPER	160	250	120	180		



Round cover





Round cover low temperatures





Technical sheet

Round cover

This product is designed to be installed in flues with high rates of condensate where there is a T tube union, so as to allow inspection.

The round plug is composed of two elements, one outside, covering the pipe, the other inside, going into the pipe itself.

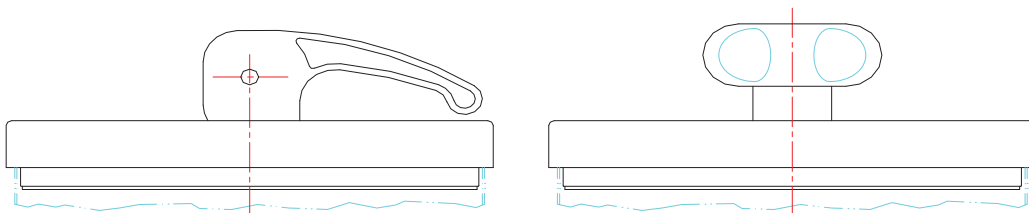
Between the two elements there is a **silicone seal**. This seal is temperature and condensate for GAS and GASOIL resistant, temperature class T200, homologated by the IMQ -AT15S0479252-01 at 03/07/2015.

This seal, under compression by means of an eccentric lever or handwheel, expands when getting on contact with the internal surface of the pipe. This creates a sealing effect against the smokes passing through the flue and the condensates inside it.

If necessary, the compression of the seal can be modified by means of a threaded bar integrated in the lever or handwheel.

The product is made of the following materials:

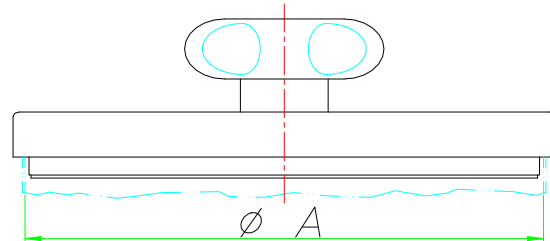
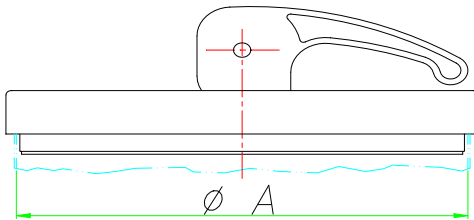
- Metal parts: thk. 10/10 AISI 304 BA – AISI 316L 2B or Copper: Cu DHP UNI 5649/1
- Lever or handwheel: of moisture and weather-resistant plastic with temperatures between -20°C and $+240^{\circ}\text{C}$.





Round Cover

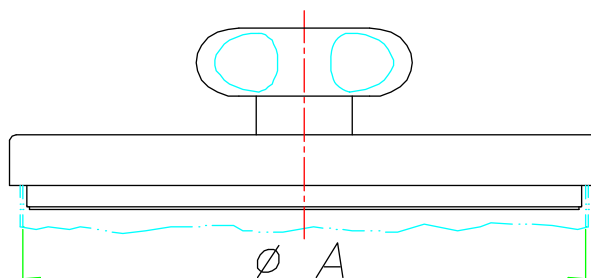
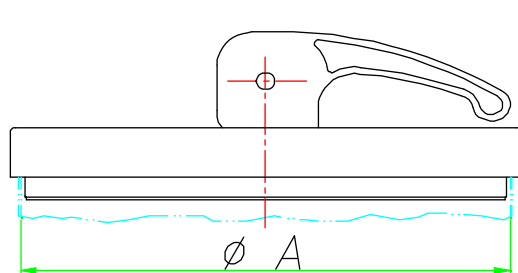
Material: AISI 304 BA



Product code	Description	D. int. Tube
		A
0000019110100	Round cover D. 080	80
0000019210100	Round cover D. 100	100
0000023610100	Round cover D. 113	113
0000019310100	Round cover D. 120	120
0000019410100	Round cover D. 130	130
0000019510100	Round cover D. 140	140
0000019610100	Round cover D. 150	150
0000019710100	Round cover D. 160	160
0000019810100	Round cover D. 180	180
0000019910100	Round cover D. 200	200
0000044410100	Round cover D. 250	250
0000045010100	Round cover D. 300	300
0000056310100	Round cover D. 060 with handwheel	60
0000025110100	Round cover D. 080 with handwheel	80
0000025210100	Round cover D. 100 with handwheel	100
0000025010100	Round cover D. 113 with handwheel	113
0000025310100	Round cover D. 120 with handwheel	120
0000025410100	Round cover D. 130 with handwheel	130
0000025510100	Round cover D. 140 with handwheel	140
0000025610100	Round cover D. 150 with handwheel	150
0000025710100	Round cover D. 160 with handwheel	160
0000025810100	Round cover D. 180 with handwheel	180
0000025910100	Round cover D. 200 with handwheel	200
0000044510100	Round cover D. 250 with handwheel	250
0000045110100	Round cover D. 300 with handwheel	300

Round Cover

Material: COPPER (cover)
AISI 304 BA (internal plate)



Product code	Description	D. int. Tube
		A
0000019110200	Round cover D. 080	80
0000019210200	Round cover D. 100	100
0000023610200	Round cover D. 113	113
0000019310200	Round cover D. 120	120
0000019410200	Round cover D. 130	130
0000019510200	Round cover D. 140	140
0000019610200	Round cover D. 150	150
0000019710200	Round cover D. 160	160
0000019810200	Round cover D. 180	180
0000019910200	Round cover D. 200	200
0000044410200	Round cover D. 250	250
0000045010200	Round cover D. 300	300
0000056310200	Round cover D. 060 +handwheel	60
0000025110200	Round cover D. 080 +handwheel	80
0000025210200	Round cover D. 100 +handwheel	100
0000025010400	Round cover D. 113 +handwheel	113
0000025310200	Round cover D. 120 +handwheel	120
0000025410200	Round cover D. 130 +handwheel	130
0000025510200	Round cover D. 140 +handwheel	140
0000025610200	Round cover D. 150 +handwheel	150
0000025710200	Round cover D. 160 +handwheel	160
0000025810200	Round cover D. 180 +handwheel	180
0000025910200	Round cover D. 200 +handwheel	200
0000044510200	Round cover D. 250 +handwheel	250
0000045110200	Round cover D. 300 +handwheel	300



Round cover high temperatures





Technical sheet

Round cover high temperature-resistant

This product has been designed to be used for flues with operation temperatures higher than 200°C and up to 700°- 800°C. It is to be installed on a T pipe union, so as to allow inspection.

The round plug is made of two elements, one, outside, covers the pipe and the other, inside, goes into the pipe itself.

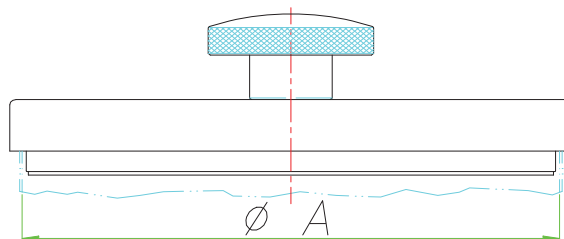
Between the two elements there is a **metal seal** AISI 302/316 with a heat-insulating jacket of ceramic fibre to insulate heat of the external element.

This seal, under pressure by means of an eccentric lever or handwheel, expands and gets on contact with the internal surface of the pipe, thus creating that sealing effect against smokes passing through the flue.

If necessary, the seal pressure can be modified by means of a threaded bar integrated in the handwheel.

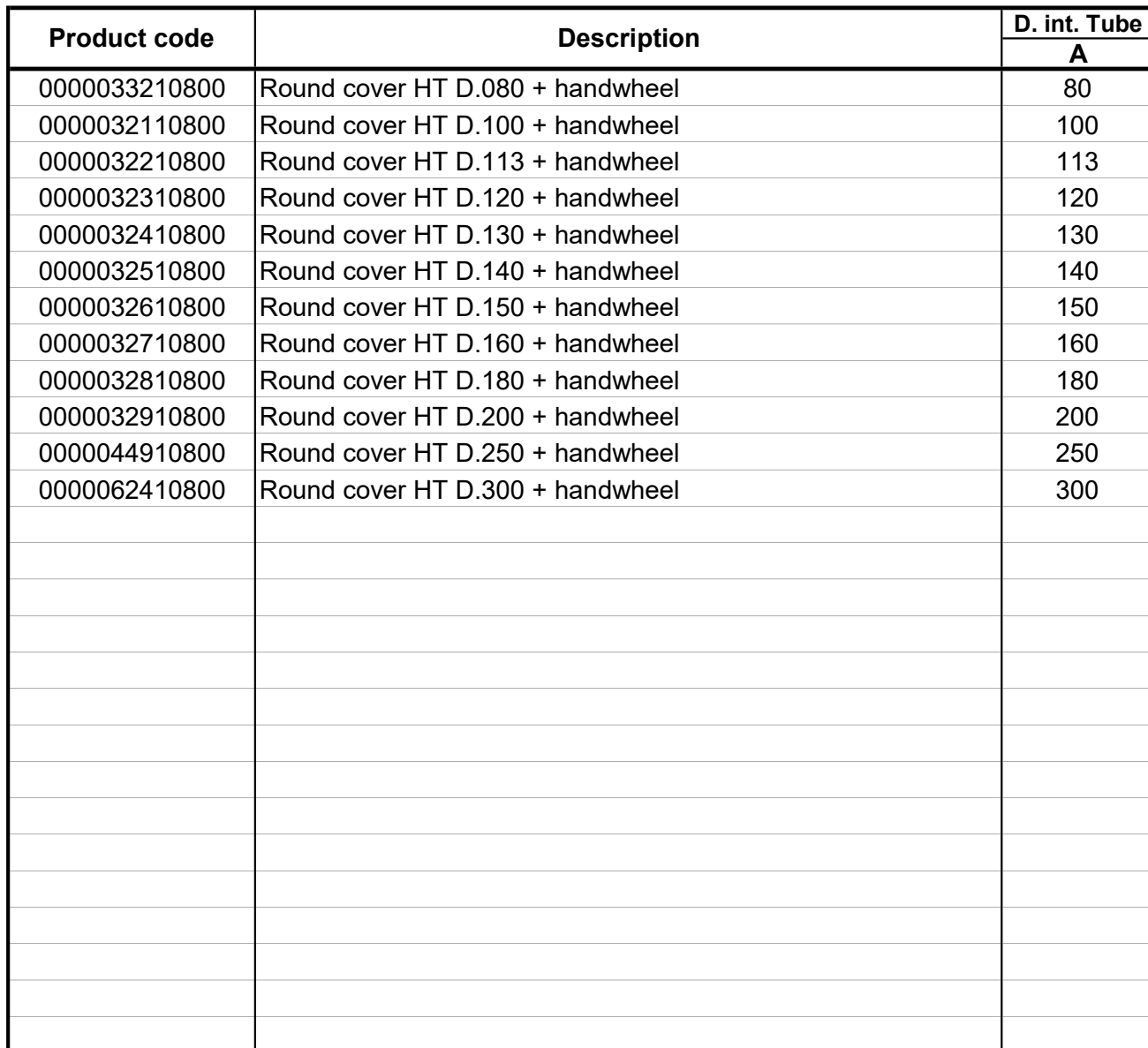
The product is made of the following materials:

- Metal parts: thk.10/10 AISI 304 BA – AISI 316L 2B or Copper: Cu DHP UNI 5649/1
- Handwheel: AISI 303.



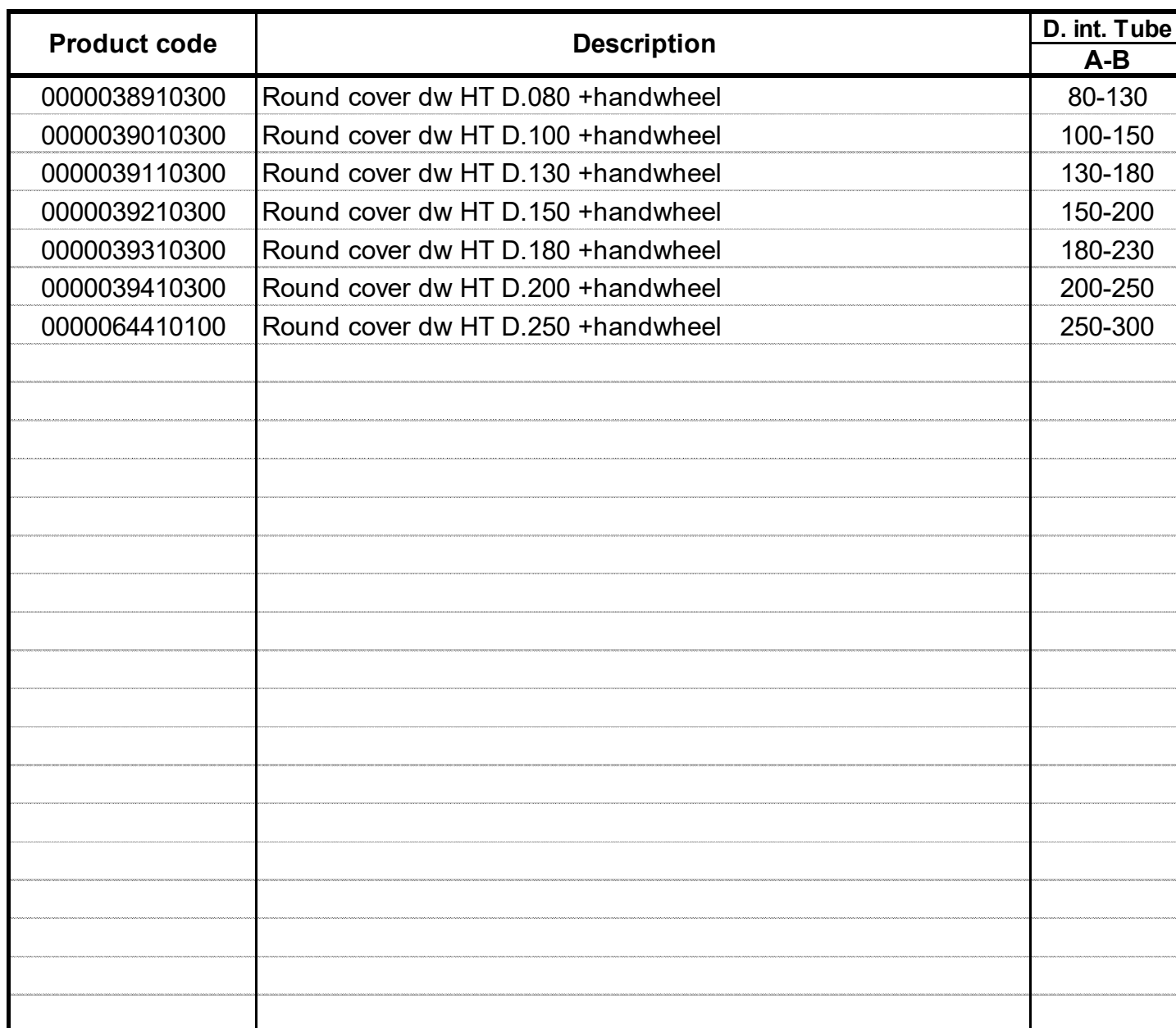


Material: COPPER (cover)
AISI 304 BA



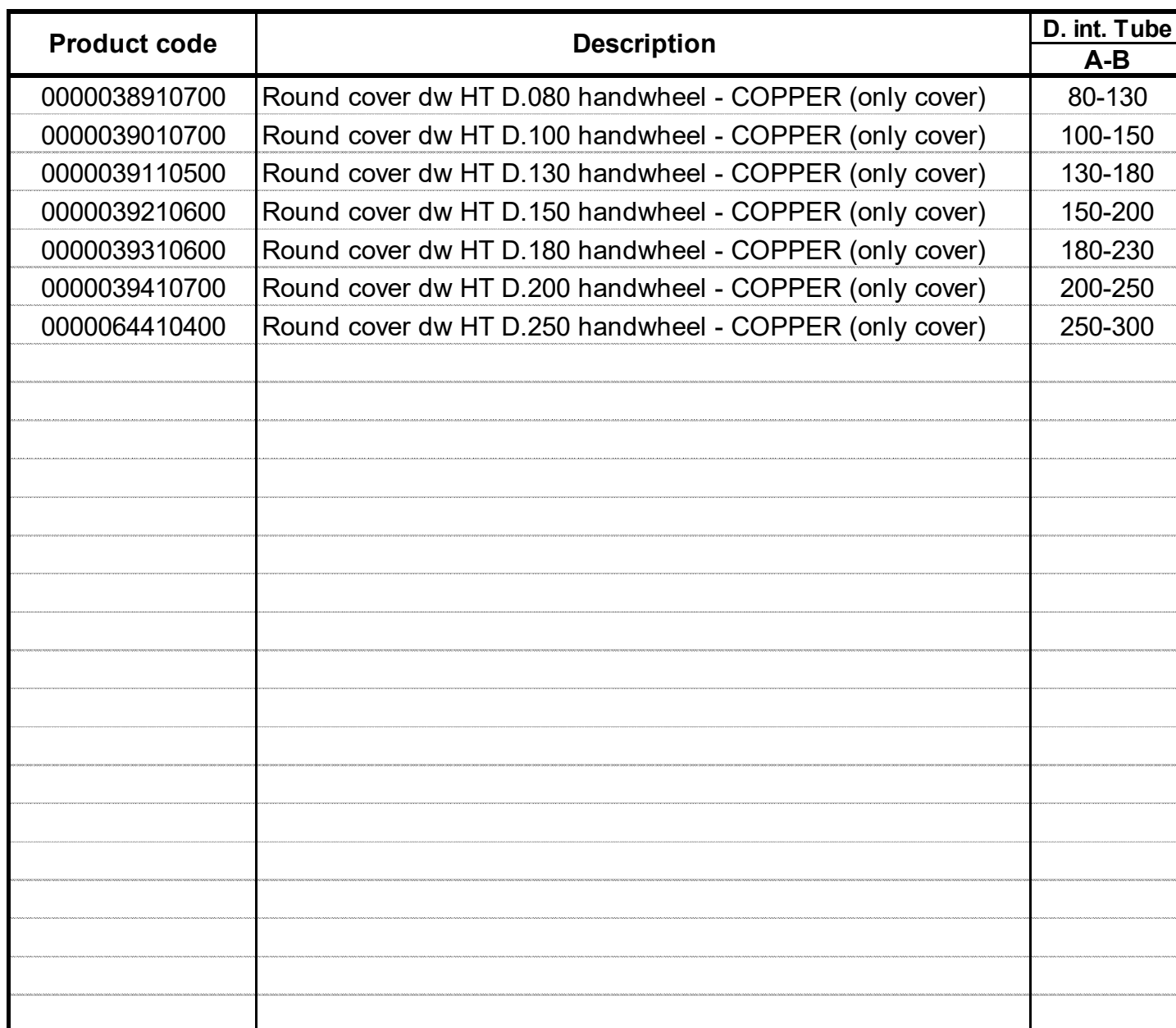


Material: AISI 304 BA





Material: COPPER (only cover)
AISI 304 BA (internal plate)





Round cover for plastic chimney flue





Technical sheet

Round cover for plastic chimney flue

This product is designed to be installed in flues with high rates of condensate where there is a T tube union, so as to allow inspection.

The round plug is composed of two elements, one outside, covering the pipe, the other inside, going into the pipe itself.

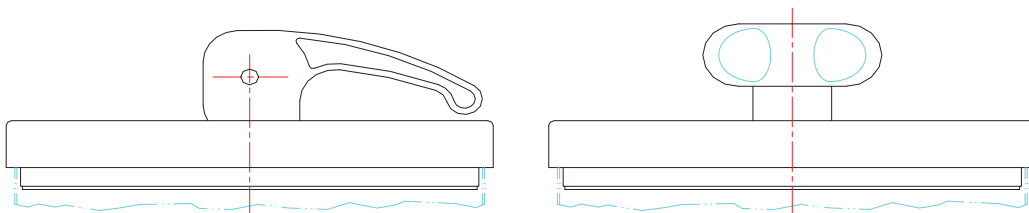
Between the two elements there is a **EPDM seal**. This seal is temperature and condensate for GAS resistant, temperature class T140, homologated by the IMQ AT15S0479252-03 del 01/12/2015.

This seal, under compression by means of an eccentric lever or handwheel, expands when getting on contact with the internal surface of the pipe. This creates a sealing effect against the smokes passing through the flue and the condensates inside it.

If necessary, the compression of the seal can be modified by means of a threaded bar integrated in the lever or handwheel.

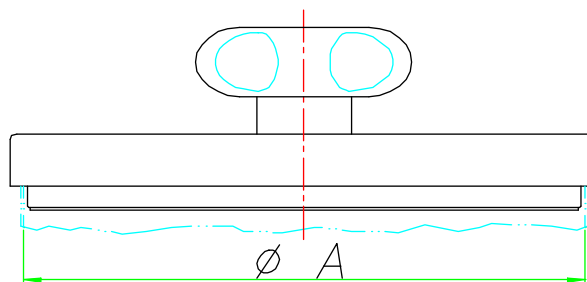
The product is made of the following materials:

- Metal parts: thk. 10/10 AISI 304 BA – AISI 316L 2B or Copper: Cu DHP UNI 5649/1
- Lever or handwheel: of moisture and weather-resistant plastic with temperatures between -20°C and $+120^{\circ}\text{C}$.





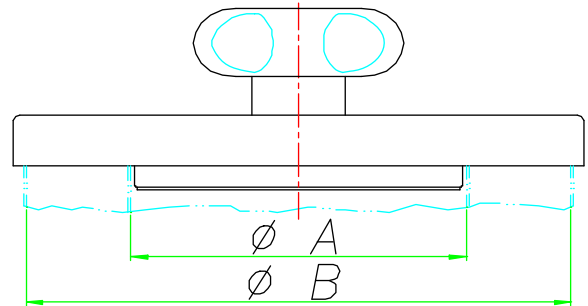
Material: AISI 304 BA



Production of accessories for flues - Deep drawing sheet metal forming - CNC Turning- 2D/3D Laser cutting and welding



Material: COPPER (cover)
AISI 304 BA (internal plate)



Production of accessories for flues - Deep drawing sheet metal forming - CNC Turning- 2D/3D Laser cutting and welding



Manometer and gas analyser holder





Technical sheet

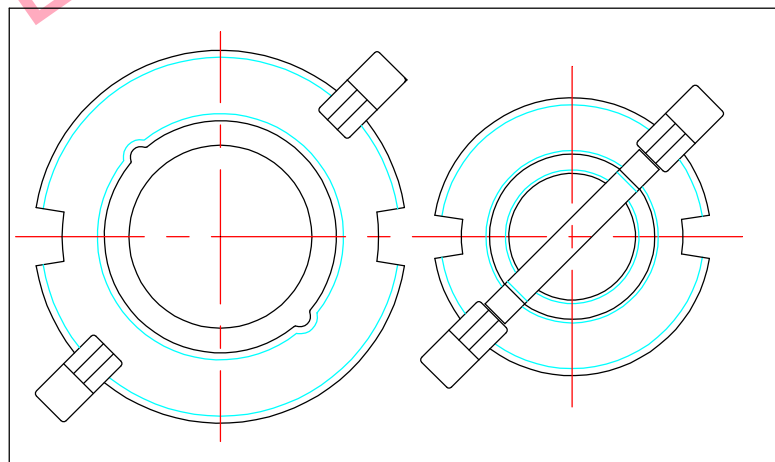
Manometer holder and smokes drawing

The manometer holder is composed of a base plate which allows the part to be fastened on the flue. On the flue there are two holes to which some collars are spot-welded. In the case of a double-surface flue they allow to overtake the insulation zone and get inside the flue.

The big hole is closed by a drilled plug to read the temperature of the manometer. It can therefore contains the manometer. The small hole, on the contrary, is closed by means of a blind plug. The clasps are mechanical.

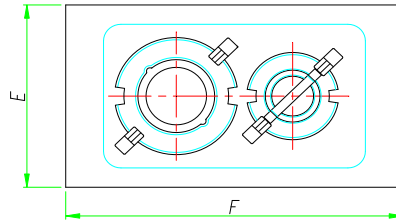
The seals that can resist up to + 200° Celsius, guarantee a sealing effect against the smokes and the possible condensate of the flue. These seals are placed on the closing plugs and, if there is a manometer, also under it.

All the mechanical parts are made of stainless steel thk. 10/10 AISI 304 BA or Copper: Cu DHP UNI 5649/1.



Manometer and gas analyser holder

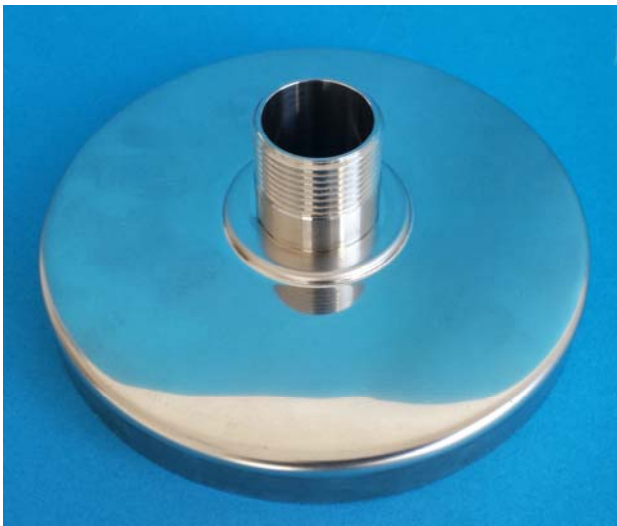
Material: AISI 304 BA - COPPER



Product code	Description	Dimension					
		A	B	C	D	E	F
0000017110100	Manometer and gas analyser holder					160	250
0000022010100	Manometer and gas analyser holder					200	290
0000024010100	Manometer and gas analyser holder					165	290
0000028010100	Manometer and gas analyser holder					225	306
0000037710100	Manometer and gas analyser holder					220	330
0000033910100	Manometer and gas analyser holder					130	220
0000034610100	Manometer and gas analyser holder					330	330
0000036010100	Manometer and gas analyser holder					158	230
0000027710100	Manometer and gas analyser holder					113	172
0000023010100	Manometer and gas analyser holder					113	190
0000017110200	Manometer and gas analyser holder COPPER					160	250
0000022010200	Manometer and gas analyser holder COPPER					200	290
0000024010200	Manometer and gas analyser holder COPPER					165	290
0000028010300	Manometer and gas analyser holder COPPER					225	306
0000037710200	Manometer and gas analyser holder COPPER					220	330
0000033910200	Manometer and gas analyser holder COPPER					130	220
0000034610200	Manometer and gas analyser holder COPPER					330	330
0000036010200	Manometer and gas analyser holder COPPER					158	230
0000027710200	Manometer and gas analyser holder COPPER					113	172
0000023010200	Manometer and gas analyser holder COPPER					113	190



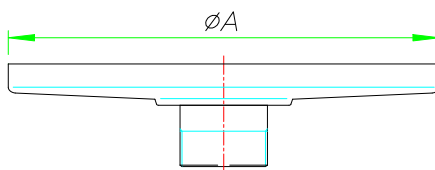
CONDENSATION EXHAUST





Plug + Drain for condensation

Material: AISI 316L

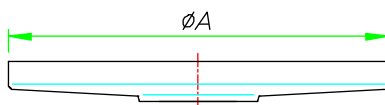


Product code	Description	Dimension
		A
0000058310100	Plug + drain for conden. D.080	80,9
0000058410100	Plug + drain for conden. D.100	100,9
0000058510100	Plug + drain for conden. D.113	*
0000058610100	Plug + drain for conden. D.120	120,9
0000058710100	Plug + drain for conden. D.130	130,9
0000058810100	Plug + drain for conden. D.140	*
0000058910100	Plug + drain for conden. D.150	150,9
0000059010100	Plug + drain for conden. D.160	*
0000059110100	Plug + drain for conden. D.180	180,9
0000059210100	Plug + drain for conden. D.200	200,9
0000059310100	Plug + drain for conden. D.250	*
0000059410100	Plug + drain for conden. D.300	*
0000059510100	Plug + drain for conden. D.350	*
0000059610100	Plug + drain for conden. D.400	*
	* (Not Available)	



Plug Enclosure

Material: AISI 316L

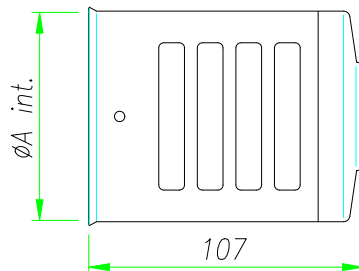
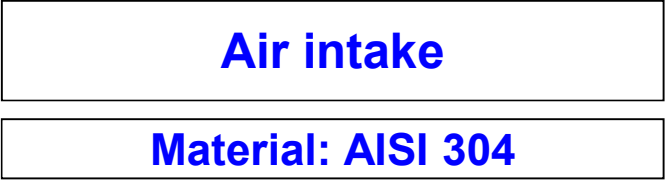


Product code	Description	Dimension
		A
0000056900200	Plug enclosure D. 80	80,9
0000057000200	Plug enclosure D. 100	100,9
0000057100200	Plug enclosure D. 113	*
0000057200200	Plug enclosure D. 120	120,9
0000057300200	Plug enclosure D. 130	130,9
0000057400200	Plug enclosure D. 140	*
0000057500200	Plug enclosure D. 150	150,9
0000057600200	Plug enclosure D. 160	*
0000057700200	Plug enclosure D. 180	180,9
0000057800200	Plug enclosure D. 200	200,9
0000057900200	Plug enclosure D. 250	*
0000058000200	Plug enclosure D. 300	*
0000058100200	Plug enclosure D. 350	*
0000058200200	Plug enclosure D. 400	*
	* (Not Available)	



AIR INTAKE FOR BOILER WHIT FLANGE WALL



[illegible]



Flat Flashing





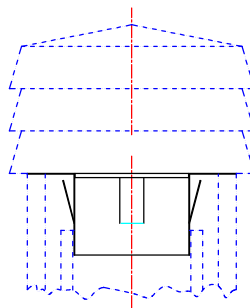
Technical sheet

Flat Flashing

The flat flashing is the fire-resistant terminal element of the chimney flue that soaks up the inner tube with the outer coat of flue itself.

It is made of a base plate where is done a hole with an edge, on which is then assembled a tube that may have holes for the ventilation of the flue.

All the metal parts of the flat flashing are made of steel thk. 5/10 AISI 304 BA-2B.





Our Contacts



EMAIL - WEB SITE



➤ info@oversea-online.com



➤ www.oversea-online.com

LINKEDIN



➤ Oversea Srl
<https://www.linkedin.com/company/oversea-srl>

FACEBOOK



➤ Overseaitalia
<https://www.facebook.com/Overseaitalia/>

TWITTER



➤ Overseaitalia
<https://twitter.com/Overseaitalia>

YOUTUBE



➤ Overseaitalia
<http://www.youtube.com/c/OverseaitaliaVerona>

PINTEREST



➤ OVERSEA Srl
<https://it.pinterest.com/overseasrl/>

INSTAGRAM



➤ overseaitalia
<https://www.instagram.com/overseaitalia/>